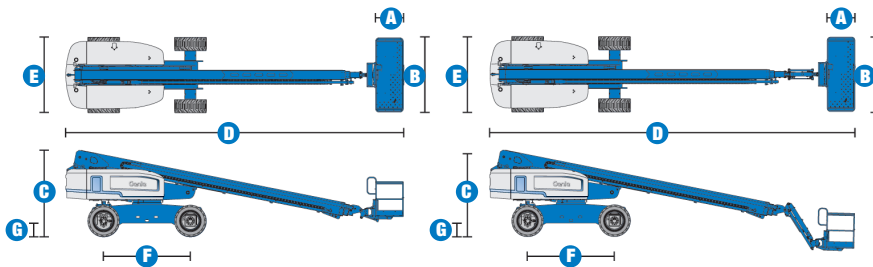


Specifications



MODELS	S™-80		S™-85	
MEASUREMENTS	Metric	US	Metric	US
Working height maximum*	26.38 m	86 ft	27.90 m	91 ft
Platform height maximum	24.38 m	80 ft	25.90 m	85 ft
Horizontal reach maximum	21.79 m	71 ft 6 in	23.32 m	76 ft 6 in
Below ground reach	1.85 m	6 ft 1 in	2.90 m	9 ft 6 in
A Platform length - 8 ft model	91 cm	3 ft	91 cm	3 ft
Platform length - 6 ft model	76 cm	2 ft 6 in	76 cm	2 ft 6 in
B Platform width - 8 ft model	2.44 m	8 ft	2.44 m	8 ft
Platform width - 6 ft model	1.83 m	6 ft	1.83 m	6 ft
C Height - stowed	2.80 m	9 ft 2 in	2.80 m	9 ft 2 in
D Length - stowed	11.13 m	36 ft 5 in	12.19 m	40 ft
Length - transport (jib tucked under)			11.58 m	38 ft
E Width	2.49 m	8 ft 2 in	2.49 m	8 ft 2 in
F Wheelbase	2.85 m	9 ft 4 in	2.85 m	9 ft 4 in
G Ground clearance - centre	33 cm	13 in	33 cm	13 in

PRODUCTIVITY

Lift capacity - 6 ft platform	227 kg	600 lbs	227 kg	500 lbs
Lift capacity - 8 ft platform	227 kg	500 lbs	227 kg	500 lbs
Platform rotation	160°	160°	160°	160°
Vertical jib rotation			135°	135°
Turntable rotation	360° continuous		360° continuous	
Turntable tailswing	1.42 m	4 ft 8 in	1.42 m	4 ft 8 in
Drive speed - stowed	5.4 km/h	3.5 mph	5.4 km/h	3.5 mph
Drive speed - raised/extended	1.1 km/h	0.68 mph	1.1 km/h	0.68 mph
Gradeability** - stowed 2WD	30%	30%	30%	30%
Gradeability** - stowed 4WD	45%	45%	45%	45%
Turning radius - axle extended: inside	3.66 m	12 ft	3.66 m	12 ft
outside	6.55 m	21 ft 6 in	6.55 m	21 ft 6 in
Controls	12 V DC proportional		12 V DC proportional	
Tyres - RT lug	385/65 D22.5		385/65 D22.5	

POWER

Power source	Deutz TD2011 L04i 4 cylinder diesel 74 hp (55 kW) Perkins 804D-33 4 cylinder diesel 63 hp (47 kW) Continental TME27 4 cylinder petrol/LPG 74 hp (55 kW)			
Auxiliary power unit	12 V DC	12 V DC	12 V DC	12 V DC
Hydraulic tank capacity	151L	40 gal	151 L	40 gal
Fuel tank capacity (Diesel)	132 L	35 gal	132 L	35 gal
Fuel tank capacity (Petrol)	114 L	30 gal	114 L	30 gal

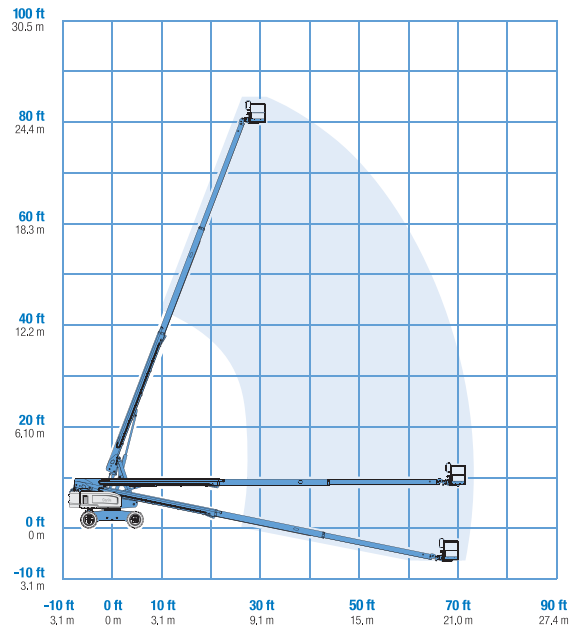
WEIGHT***

2WD	16,057 kg	35,400 lbs	17,191 kg	37,900 lbs
4WD	16,103 kg	35,500 lbs	17,237 kg	38,000 lbs

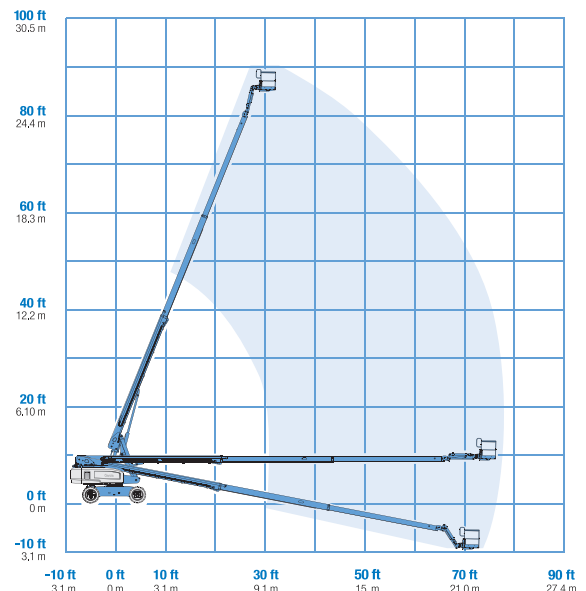
STANDARDS COMPLIANCE

CE EN280, PB-10-611-03

RANGE OF MOTION S™-80



RANGE OF MOTION S™-85



* The metric equivalent of working height adds 2 m to platform height. U.S. adds 6 ft to platform height.

** Gradeability applies to driving on slopes. See Operator's Manual for details regarding slope ratings.

*** Weight will vary depending on options and/or country standards.

Features

EASILY CONFIGURED TO MEET YOUR NEEDS

PLATFORM OPTIONS

- Steel 2.44 m (8 ft) (standard)
- Steel 1.83 m (6 ft)
- Steel 2.44 m (8 ft) tri-entry

JIB OPTIONS

- Non-jib
- 1.52 m (5 ft) jib boom

POWER OPTIONS

- Deutz turbocharged diesel 74 hp (55 kW)
- Perkins diesel 63 hp (50 kW)
- Continental petrol/LPG 74 hp (56 kW)

DRIVE OPTIONS

- 2 x 4
- 4 x 4

AXLE

- Fixed width with active oscillation

TYRE OPTIONS

- Rough terrain, foam-filled (standard)
- Rough terrain, non-marking foam-filled

STANDARD FEATURES

MEASUREMENTS

S™-80

- 26.38 m (86 ft) working height
- 21.79 m (71 ft 6 in) horizontal reach
- 227 kg (500 lb) lift capacity

S™-85

- 27.90 m (91 ft) working height
- 23.32 m (76 ft 6 in) horizontal reach
- 227 kg (500 lb) lift capacity

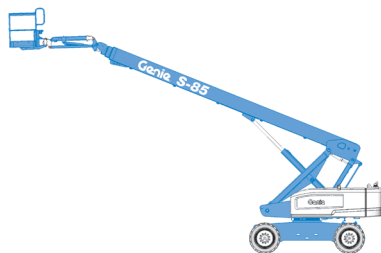
PRODUCTIVITY

- Self-levelling platform
- Hydraulic platform rotation
- Fully proportional Hall effect joystick controls
- Thumb rocker steer
- Drive enable
- AC power to platform
- Horn
- Hour meter
- Tilt alarm
- Descent alarm
- 360° continuous turntable rotation
- Locking low profile turntable covers
- Positive traction drive
- Two speed wheel motors
- Certified load sensor

STANDARD FEATURES

POWER

- All engines are emissions compliant
- 12 V DC auxiliary power
- Anti-restart engine protection
- Auto engine fault shutdown
- Catalytic converter muffler
- Engine block heater (Continental)



OPTIONS & ACCESSORIES

PRODUCTIVITY

- 340 kg (750 lb) capacity S™-80 only
- Platform swing gate
- Half mesh platform inserts with swing gate
- Platform top auxiliary rail
- Air line to platform
- Hydraulic oil cooler
- Fire resistant hydraulic oil
- Biodegradable hydraulic oil
- Basic hostile environment kit
- Deluxe hostile environment kit
- Aircraft protection package (6 ft platform only)
- Tool tray
- Fluorescent tube caddy
- Pipe cradle (pair)
- Alarm package (flashing beacon and travel alarm)
- Panel cradle package*
- Platform work lights
- Lockable platform control box covers
- Second battery
- Tow package
- Weld leads to platform

* Available on select models

POWER

- Engine gauge package
- AC generator packages (110V/60Hz, 3000 W or 220V/50Hz, 2500 W)
- Cold weather packages
- Diesel scrubber muffler with spark arrestor
- Additional LPG tank with carrier
- Intake air precleaner

UK

The Maltings
Wharf Road
Grantham NG31 6BH
UK
Tel: +44 (0)1476 584333
Fax: +44 (0)1476 584334

France

10, ZA de la Croix St. Mathieu
28320 Gallardon
France
Tel: +33 (0)2 37 26 09 99
Fax: +33 (0)2 37 26 09 98

Germany

Stedingerstrasse 324
27751 Delmenhorst
Germany
Tel: +49 (0)4221 491 810
Fax: +49 (0)4221 491 820

Spain

Gaià 31, Pol. Ind. Plá d'en Coll
08110 Montcada i Reixac
Barcelona
Spain
Tel: +34 93 572 50 90
Fax: +34 93 572 50 91

Scandinavia

Aröds industriväg 34
422 43 Hisings Backa
Sweden
Tel: +46 31 57 51 00
Fax: +46 31 57 51 04

Middle East

Terex Middle East
PO Box 282325, Dubai
U.A.E.
Tel: +971 4 885 8030
Fax: +971 4 885 6364
Email: awp.infome@terex.com

Genie United States

18340 NE 76th Street
P.O. Box 97030
Redmond, WA
USA 98073-9730
Tel: +1 425 881-1800
Fax: +1 425 883-3475

Email: AWP-InfoEurope@terex.com

Distributed By: